



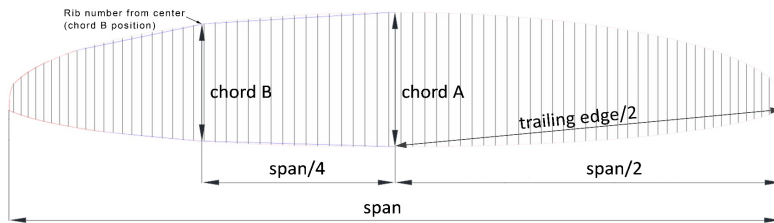
Measurement Report Template

CIVL CCC 2020 (Version 1.1)

Brand	FLOW	Size	M	Test laboratory Cert. #	n/a
Model	SPECTRA2	Serial #	SP21MRE2101003	Certification date	23/11/2021

Canopy dimensions

Position	Rib # from center	Distance [mm]	Tension [daN]	Manual tolerances	Aspect ratio 4*span / (chord A+2.5*Chord B)	Number cells	Scale factor
Full Span	110	14084	5	2%	7.87	111	1.16953
1/2 Trailing Edge	55	6947	5	1%			
Chord A	1	2295	1	1%			
Chord B	25	1945	1	1%			



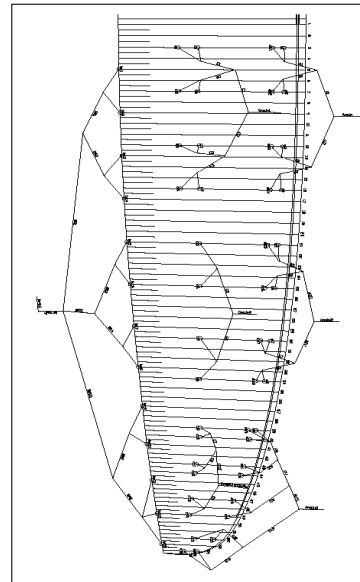
Chord length, inlet position, tabs position measured from trailing edge.

(The tab A & B & C can be on different rib, take care to specify it)

On first lined rib (from center)	Rib n° from center	Distance [mm]	Tension [daN]	Manual tolerances
Chord	3	2230	1	+/-10mm
Top of inlet	3	2135	5	+/-10mm
Bottom of inlet	3	2110	5	+/-10mm
Tab Aa*	3	1910	5	+/-10mm
Tab Ab*	3	1750	5	+/-10mm
Tab B*	3	957	5	+/-10mm
Tab C*	3	722	5	+/-10mm

On last lined rib of Group 2 (from center)	Rib n° from center	Distance [mm]	Tension [daN]	Manual tolerances
Chord	21	1980	1	+/-10mm
Top of inlet	21	1901	5	+/-10mm
Bottom of inlet	21	1878	5	+/-10mm
Tab Aa*	21	1693	5	+/-10mm
Tab Ab*	21	1540	5	+/-10mm
Tab B*	21	834	5	+/-10mm
Tab C*	21	n/a	5	+/-10mm

On last lined rib (stabilo, from center)	Rib n° from center	Distance [mm]	Tension [daN]	Manual tolerances
Chord	54	490	1	+/-10mm
Tab A*	54	415	5	+/-10mm
Tab B*	54	259	5	+/-10mm



*Bridle (tab) position measurement:
end of trailing edge to center bridle (tab)



Measurement Report Template CIVL CCC 2020 (Version 1.0)

ABSOLUTE LINE LENGTH

Absolute line length from bottom riser to canopy in mm with 5daN of tension (Manual tolerances +/-10mm)

For scaled sizes: lines are within +/-20mm of the initial size x scale factor

Number	A			A'			B		
	Manual	Glider	Delta	Manual	Glider	Delta	Manual	Glider	Delta
1	7959	7969	10	7925.5	7934	9	7973	7955.5	1.2
2	7831	7834.5	4	7796	7801	5	7821	7804	6.8
3	7794.5	7797	3	7761.5	7759	-3	7758	7740.5	3.8
4	7866.5	7865	-2	7838	7838	0	7783	7774.5	4.3
5	7755.5	7763	8	7731	7736	5	7750	7722.5	-3.7
6	7586	7591.8	6	7560	7565	5	7583	7567	-5.8
7	7493	7489.8	-3	7468.5	7466	-2	7482	7476	-0.1
8	7501	7496.3	-5	7481	7482	1	7505	7492.5	-1
9	7231	7225.1	-6	7216	7210		7254	7278.5	-5.6
10	7180.5	7175.1	-5				7207	7229	-1.4
11	7101	7096.3	-5				7109	7140	1
12	7098	7098.1	0				7098	7128	1.4
13	7043	7041.7	-1				7049	7069	-3.5
14	7056	7058.5	3				7056	7069	0.4
15	6938	6947.1	9				6968	6961	5.2
16	6939	6946	7				6986	6985	1.2

Number	C		
	Manual	Glider	Delta
1	8042	8050	8
2	7901.5	7910	9
3	7836	7843	7
4	7857.5	7864	7

Measurement Report Template CIVL CCC 2020 (Version 1.0)

Riser length

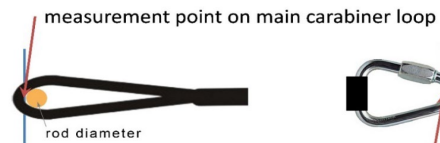
From bottom riser to top maillon on each branche in mm with 5daN (Manual tolerances +/-5mm)

Trimm speed setting	A1	A3	Stabi	B	Δt (= A1-B)	Attachment rod \varnothing (mm)
Manual	540	536	535	535	15	3
Glider	540	536	530	530	10	3

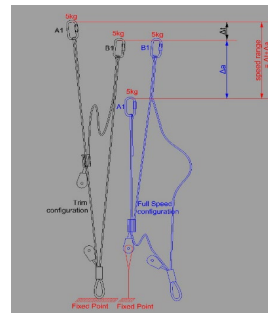
Full speed setting	Δa (=B-A1)	B-A3	Total speed range ($\Delta t + \Delta a$)
Manual	140	120	140
Glider	142	118	141

High speed setting	Δa (=B-A1)	Total high speed range > 100	
CCC	100	YES	100
Glider	102	YES	103

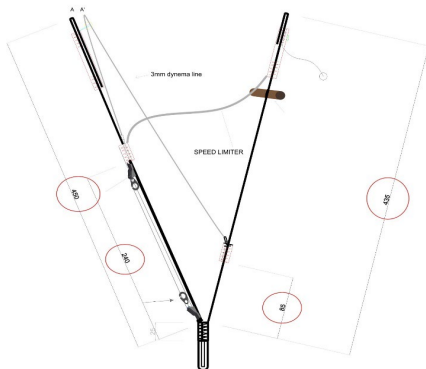
Riser measurement points



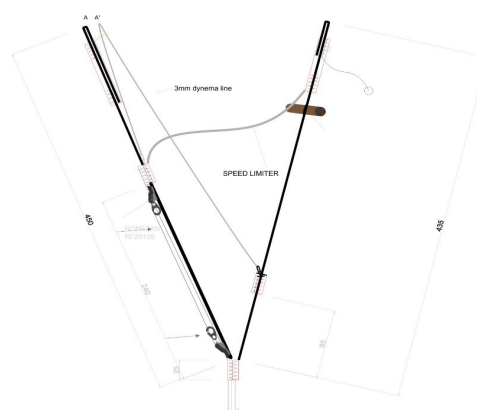
measurement point on maillon / line attachment point



Riser measurement lengths



Riser drawing (manufacturer)





Measurement Report Template
 CIVL CCC 2020 (Version 1.0)

Table of line materials												
Upper												
	A		AB		B		C		BR			
1	Elderid	8000-090	Elderid	8000-090	Elderid	8000-050	Elderid	8000-050	Elderid	8000-025		
2	Elderid	8000-070	Elderid	8000-050	Elderid		Elderid		Elderid			
3	Elderid		Elderid		Elderid		Elderid					
4	Elderid	8000-090	Elderid	8000-090	Elderid		Elderid		Elderid			
5	Elderid	8000-090	Elderid	8000-050	Elderid		8000-050	Elderid	Elderid			
6	Elderid	8000-070	Elderid		Elderid			Elderid	Elderid			
7	Elderid		Elderid		Elderid			Elderid	Elderid			
8	Elderid	8000-090	Elderid		Elderid			Elderid	Elderid		Elderid	
9	Elderid	8000-050						Elderid	Elderid		Elderid	Elderid
10	Elderid							Elderid	Elderid		Elderid	
11	Elderid							Elderid	Elderid		Elderid	
12	Elderid							Elderid	Elderid		Elderid	
13	Elderid			Elderid				Elderid	Elderid			
14	Elderid			Elderid				Elderid	Elderid			
15	Elderid	8000-025			Elderid			8000-025				
16	Elderid				Elderid							
H/middle												
	A		B		BR H/Middle							
1	Elderid	8000-130			Elderid	8000-090		Elderid	8000-025			
2	Elderid				Elderid			Elderid				
3	Elderid				Elderid		Elderid					
4	Elderid				Elderid		Elderid					
5	Elderid	8000-090			Elderid		8000-050	Elderid				
6	Elderid				Elderid			Elderid				
7	Elderid				Elderid			Elderid				
8	Elderid				Elderid			Elderid				
9	Elderid	8000-050			Elderid	8000-050		Elderid				
10	Elderid				Elderid			Elderid				
11	Elderid				Elderid			Elderid				
12	Elderid	8000-025			Elderid			Elderid				
13	Elderid				Elderid							
Middle												
	A		B		BR L/Middle							
1	Elderid	8000-190			Elderid		8000-130	Elderid	8000-050			
2	Elderid				Elderid			Elderid				
3	Elderid				Elderid			Elderid				
4	Elderid	8000-130			Elderid		8000-090	Elderid				
5	Elderid				Elderid			Elderid				
6	Elderid	8000-130			Elderid		8000-050					
7	Elderid	8000-050										
L/Middle												
	A		B		BR L/Middle							
1				Elderid	PPSL-160							
Main												
	A		B		BR H/Main							
1	Elderid	8000-360			Elderid	8000-190	Elderid	8000-190				
2	Elderid				Elderid	8000-190						
3	Elderid	8000-190			Elderid	8000-130	Elderid	10N-200				

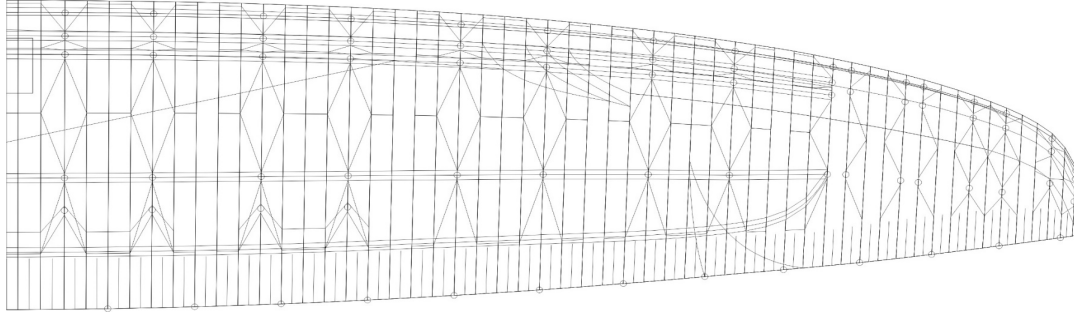
Upper and lower line loop reinforcement:

Measurement Report Template

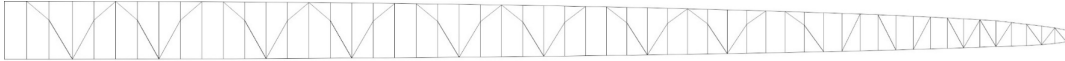
CIVL CCC 2020 (Version 1.0)

Drawings and pictures

Diagonals, Hstraps and Mini Ribs (top view)



Diagonals (Front view)



Vent (Inlet) shape

